

The background features a series of overlapping, wavy red lines that create a sense of motion and depth. The lines are most dense on the left side and become more sparse towards the right. The overall color palette is a gradient of light red to white.

DESIGN COLLECTION

SPECTER KOREA

2017



WACX 755



WACX 756



WACX 757



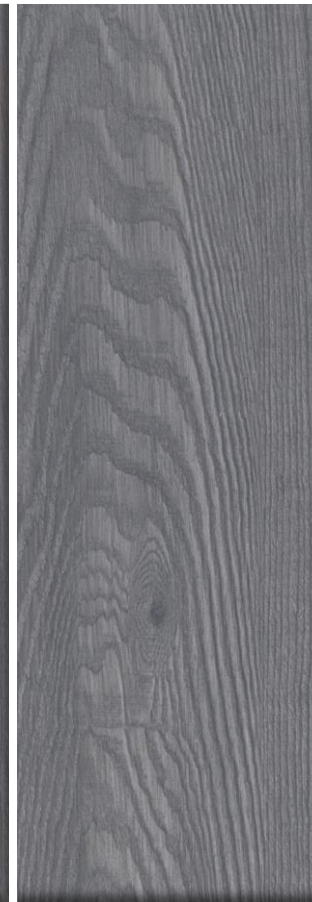
WACX 758



WACX 759



WACX 760



WACX 761



WACX 762



WACX 763



WAMX 700



WAMX 701



WACX 702



WACX 703



WAEX 706



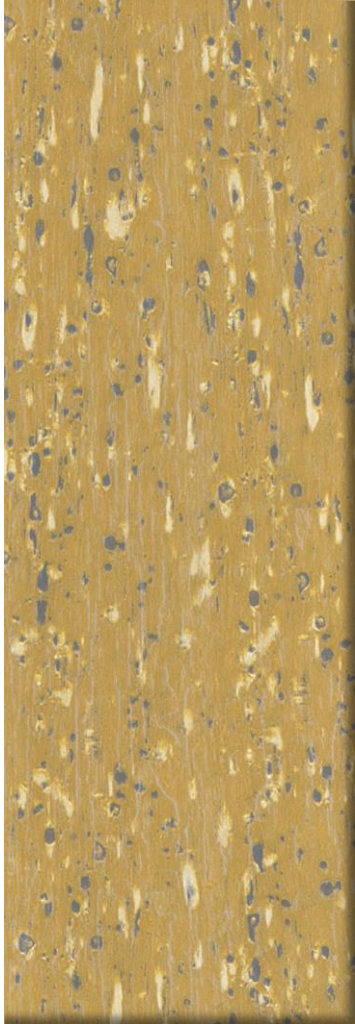
WAEX 707



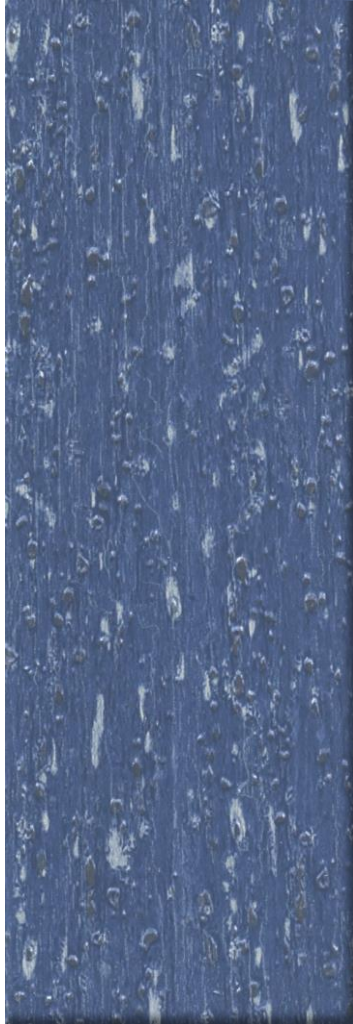
WAEX 708



WAEX 709



WACX 764



WACX 765



WACX 766



WACX 767



WACX 768



AACX 756



AACX 757



AACX 758



AACX 759



AACX 760



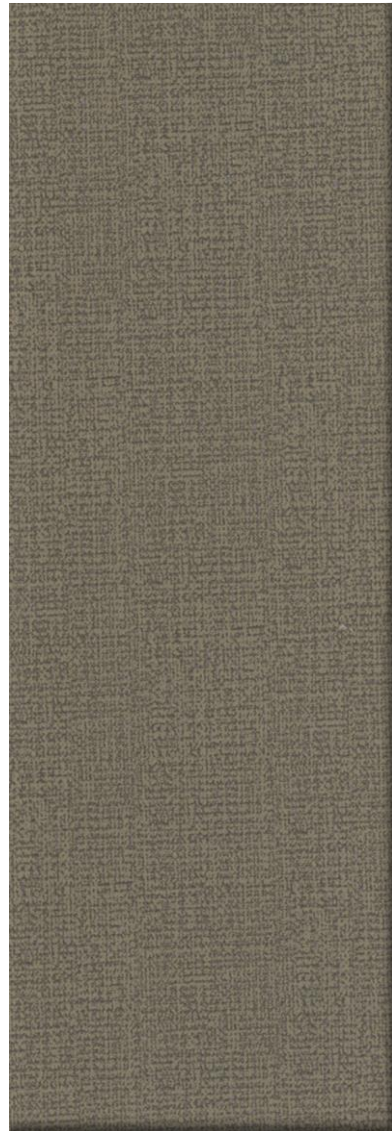
AACX 761



AACX 762



AACX 763



AACX 764



AACX 765



AACX 766



AAMX 767



AAMX 768



AAMX 769



AAMX 770



AAMX 771



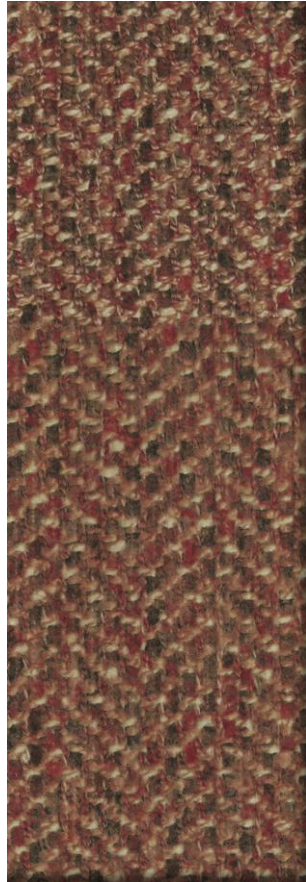
AACX 794



AACX 795



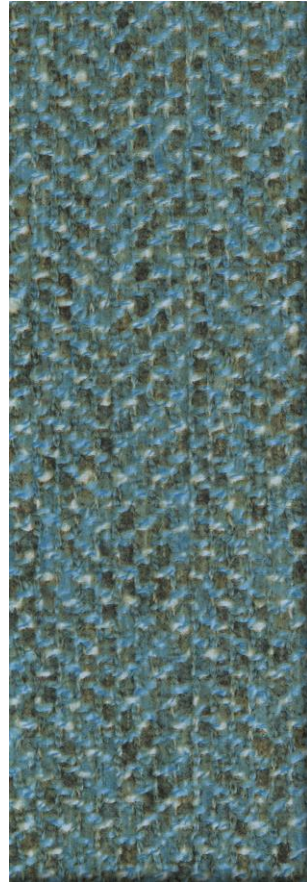
AACX 796



AACX 797



AACX 798



AACX 799



AACX 783



AACX 784



AACX 785



AACX 786



AACX 787



AACX 788



AACX 789



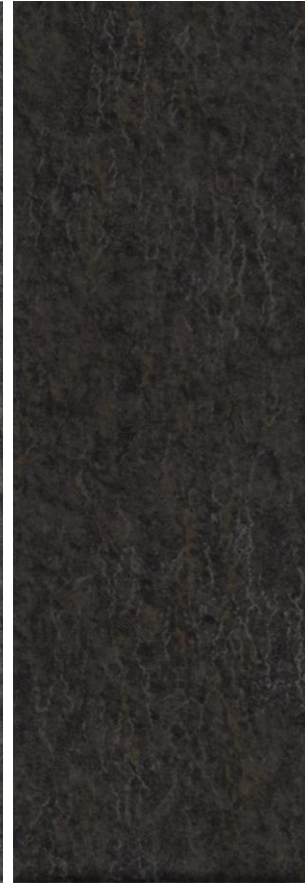
AACX 790



AACX 791



AACX 792



AACX 793



AACX 817



AACX 818



AACX 819



AACX 820



AACX 821



AACX 822



AACX 823



AACX 824



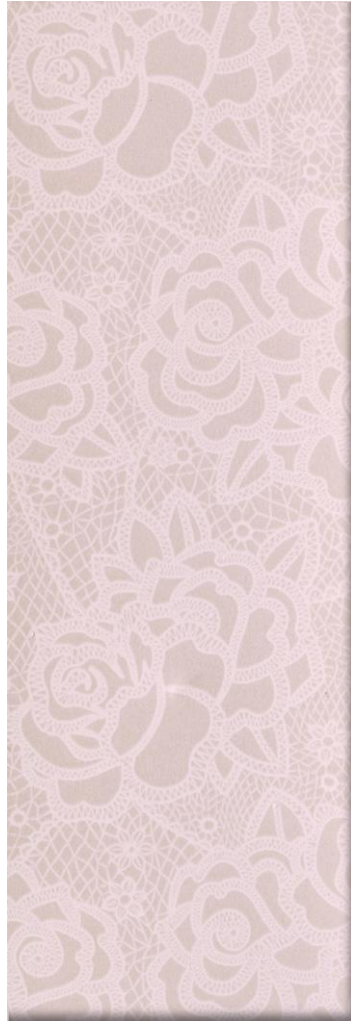
AACX 825



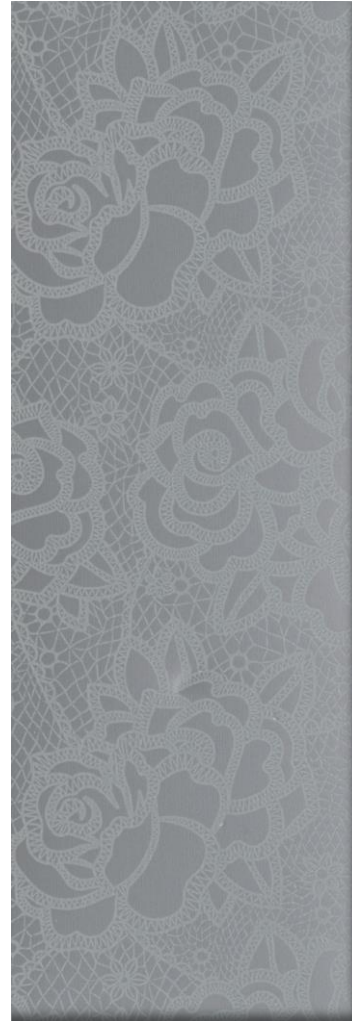
AAMX 800



AAMX 801



AAMX 802



AAMX 803



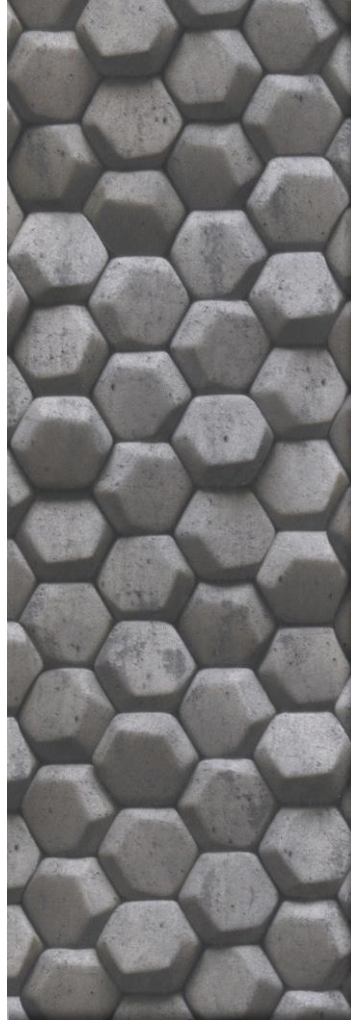
AAMX 804



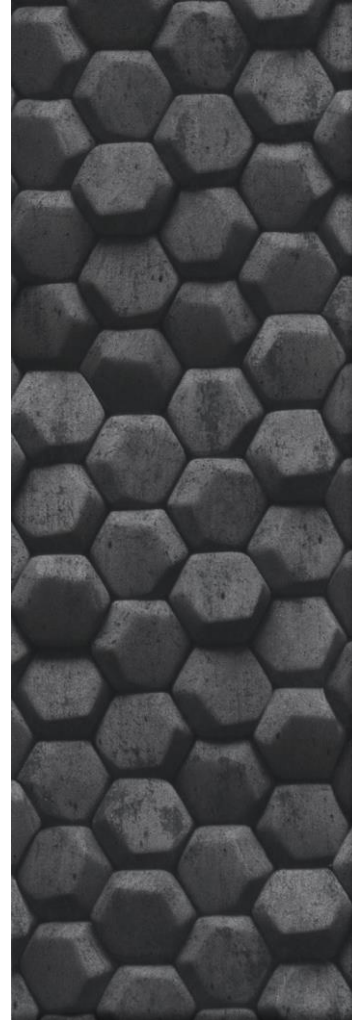
AACX 805



AACX 806



AACX 807



AACX 808



AACX 809



AACX 810 CT.PL



AACX 811 CT.PL



AACX 812 CT.PL



AACX 813 CT.PL



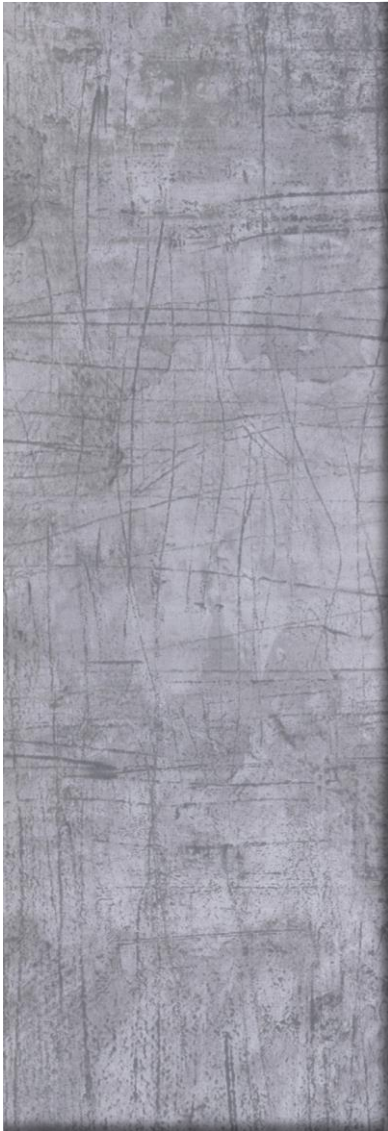
AACX 814 CT.PL



AACX 815 CT.PL



AACX 816 CT.PL



AACX 772



AACX 773



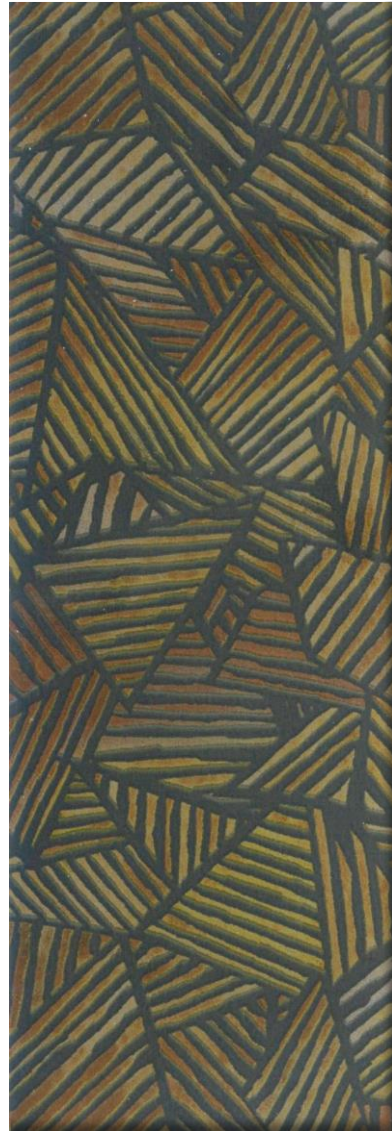
AACX 774



AACX 775



GAMX 903



GAMX 904



GAMX 905



GAMX 906



GAMX 912



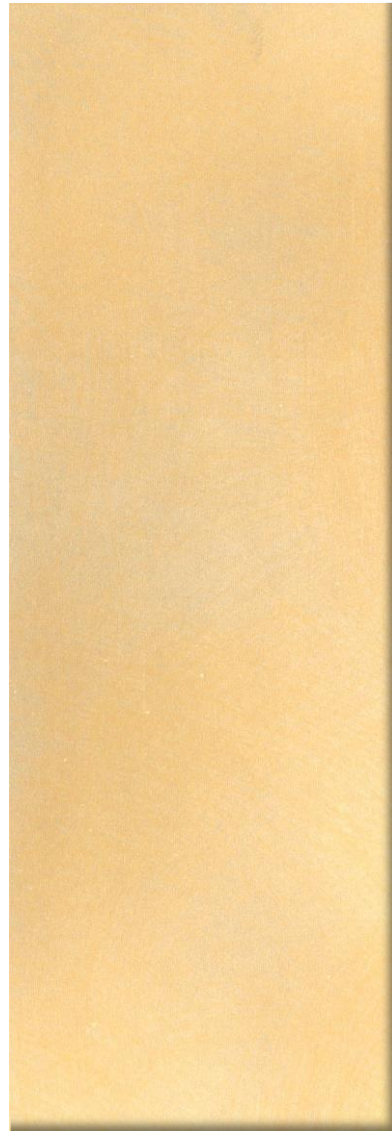
GAMX 913



GAMX 914



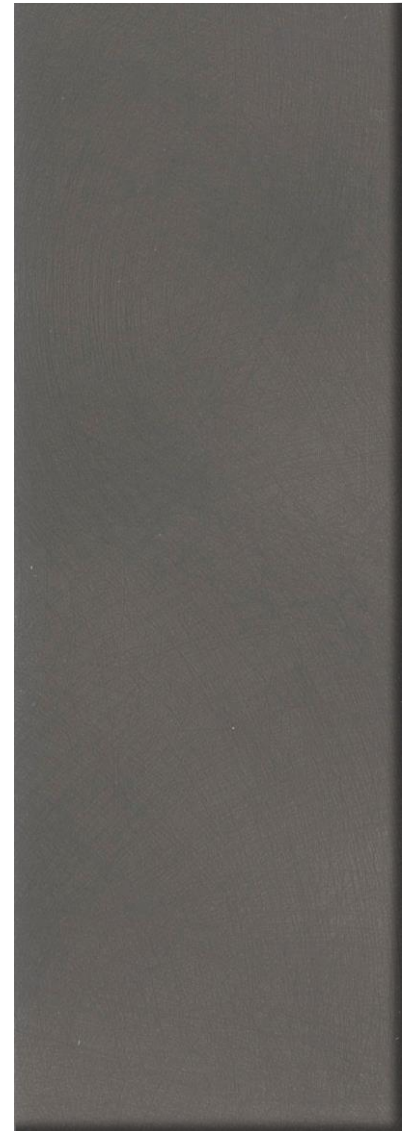
GACX 920



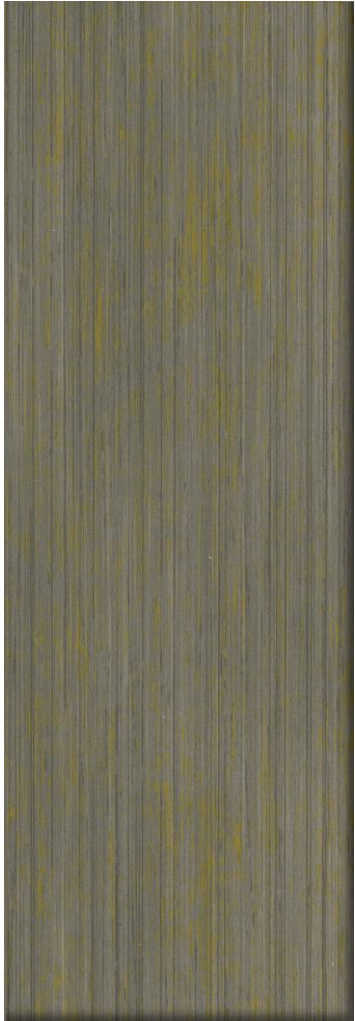
GACX 921



GACX 922



GACX 923



GAEX 886



GAEX 887



GAEX 888



GAEX 889



GAEX 890



GAMX 891



GAMX 892



GAMX 893



GAMX 894



GAMX 895



GAMX 896



GAMX 897



GAMX 898



GAMX 899



GAMX 900



GAMX 901



GAMX 902



GAMX 909



GAMX 910



GAMX 911



GACX 915



GACX 916



GACX 917



GACX 918



GACX 919