

The background features a light, neutral-toned surface with several overlapping, wavy lines in a vibrant red color. These lines originate from the left side and curve across the bottom of the frame, creating a sense of motion and depth. The lines are composed of many thin, parallel strokes, giving them a textured, almost fabric-like appearance.

**DESIGN COLLECTION**

**SPECTER KOREA**

**2022-2023**





WACX 973.EM



WACX 974.EM



WACX 975.EM



WACX 976.EM





WAGX 961.EM



WACX 962.EM



WAGX 963.EM



WACX 964.EM





WAEX 977.EM



WAEX 978.EM



WAEX 979.EM



WAEX 980.EM





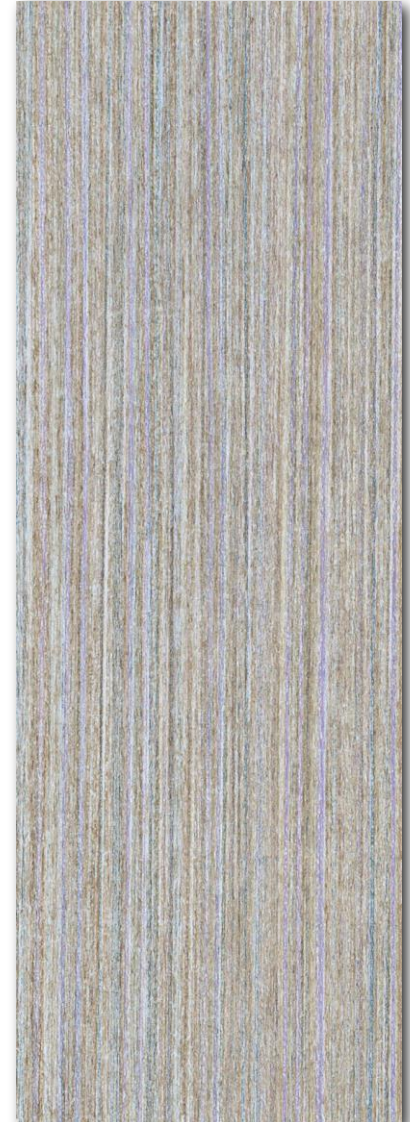
WAEX 981.EM



WAEX 982.EM



WAEX 983.EM



WAEX 984.EM





WACX 969.EM



WACX 970.EM



WACX 971.EM



WACX 972.EM





WAEX 965.EM



WAEX 966.EM



WAEX 967.EM



WAEX 968.EM





WAEX 949.EM



WAEX 950.EM



WAEX 951.EM



WAEX 952.EM





WAEX 957.EM



WAEX 958.EM



WAEX 959.EM



WAEX 960.EM





WACX 924



WACX 925



WACX 926



WACX 928





WAEX 943



WAEX 944



WAEX 945





WACX 946



WACX 947



WACX 948





WAEX 953



WAEX 954



WAEX 955



WAEX 956





AAEX 975



AAEX 976



AAEX 977





AAEX 978



AAEX 979



AAEX 980





AAMX 981



AAMX 982



AAMX 983





AAMX 984



AAMX 985



AAMX 986





AACX 987



AACX 988



AACX 989





AAMX 990



AAMX 991

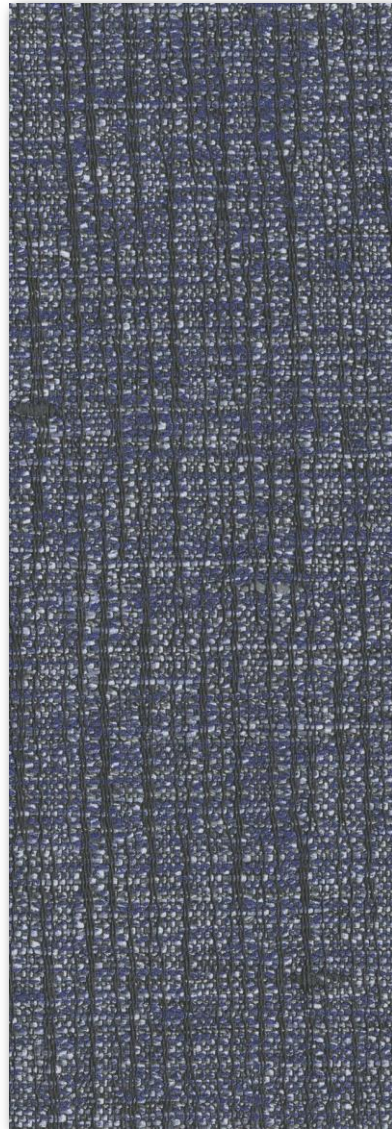


AAMX 992

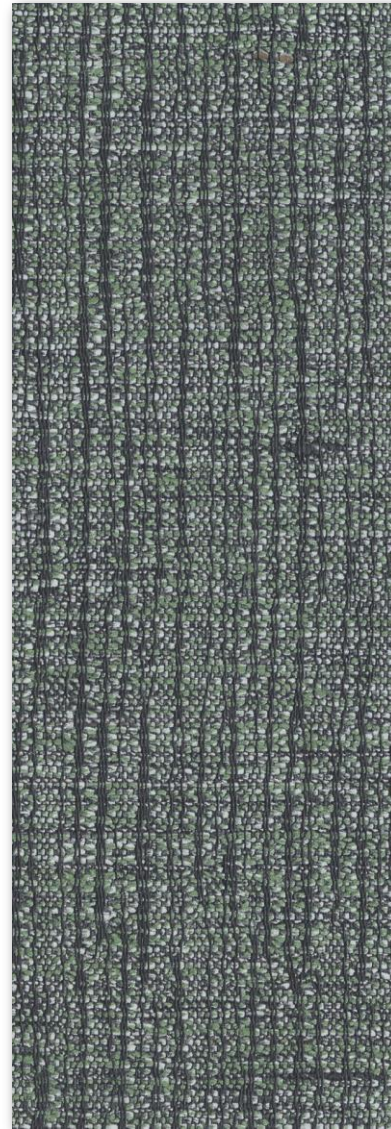




AACX 993



AACX 994



AACX 995



AACX 996





AAGX 997



AAGX 998

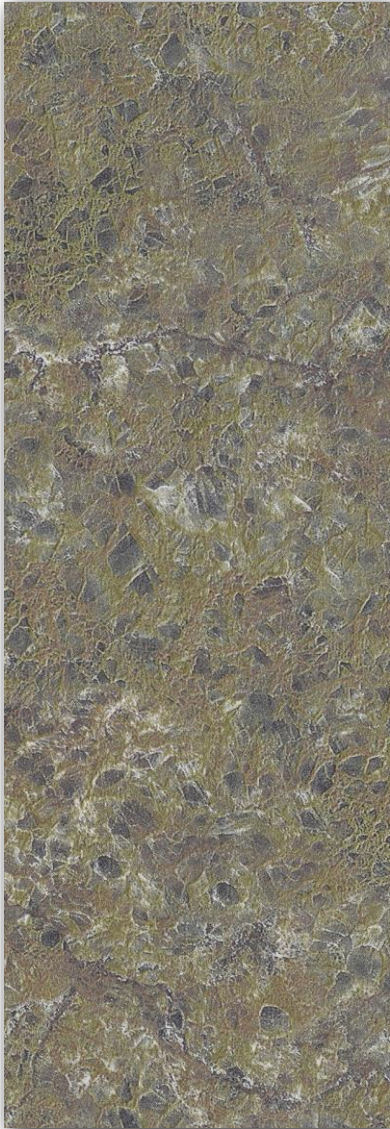


AAGX 999

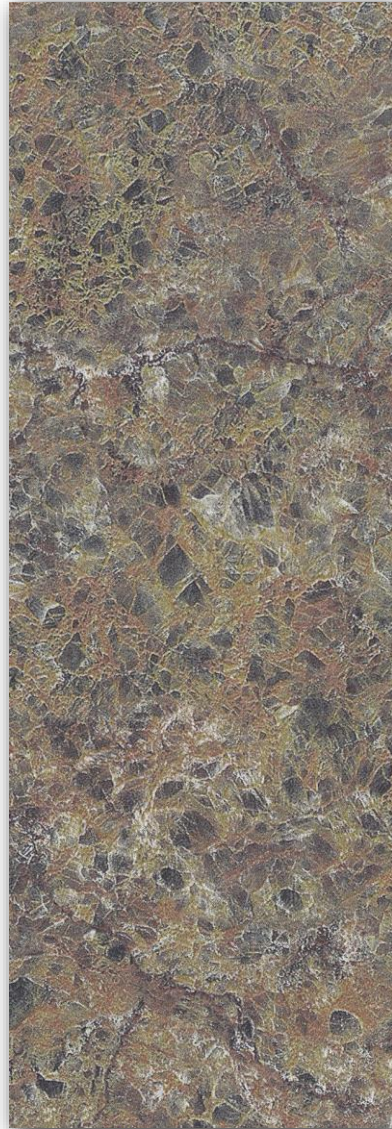


AAGX 1000





AAMX 1001.EM



AAMX 1002.EM



AAMX 1003.EM

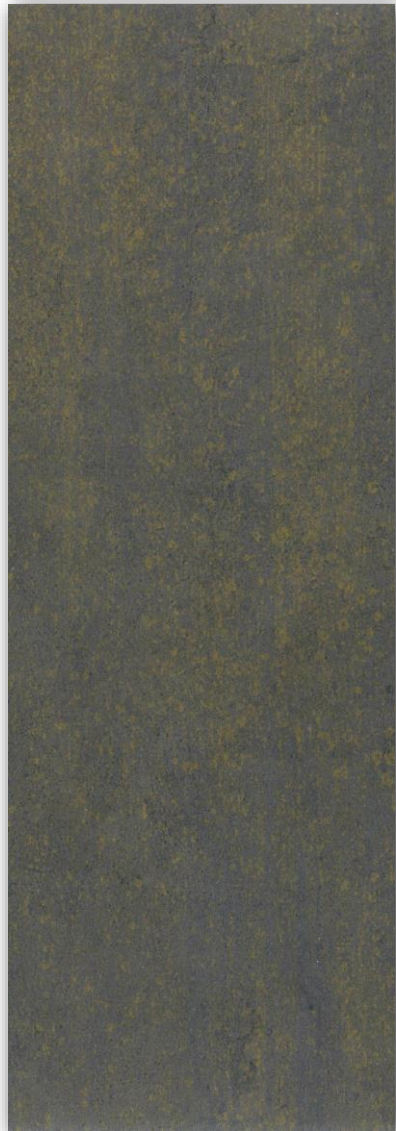


AAMX 1004.EM





GAMX 1069



GAMX 1070



GAMX 1071





GAMX 1072



GAMX 1073



GAMX 1074



GAGX 1075



GAGX 1076





GAEX 1077.HL



GAEX 1078.HL

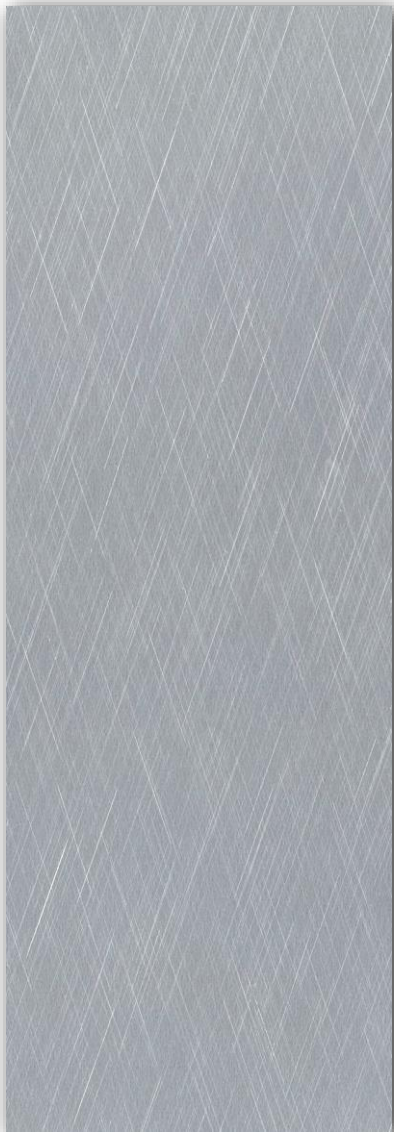


GAEX 1079.HL



GAEX 1080.HL

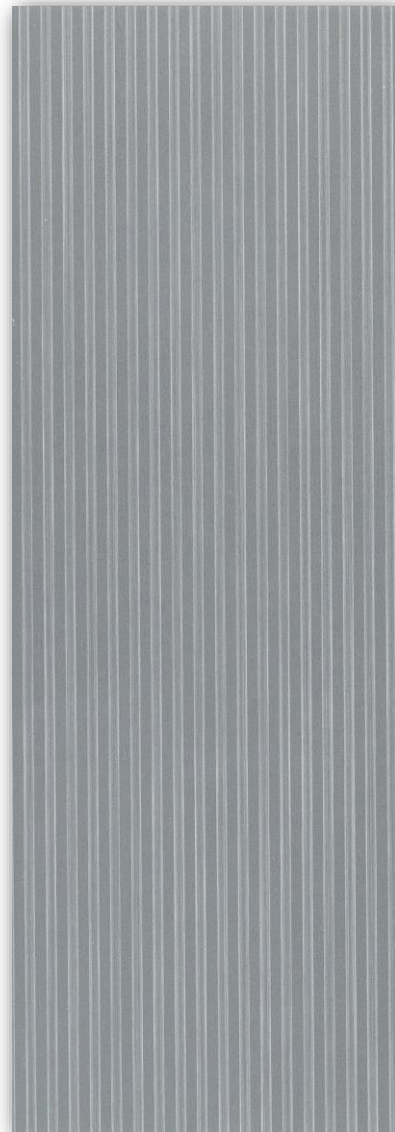




GAEX 1081.HL



GAEX 1082.HL



GAEX 1083.HL

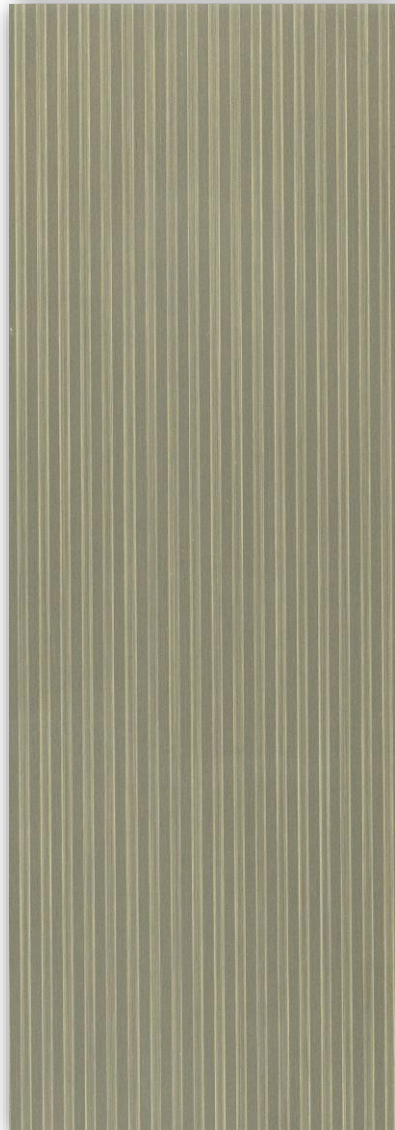


GAEX 1084.HL





GAEX 1085.HL



GAEX 1086.HL



GAEX 1087.HL



GAEX 1088.HL