

The background features a series of overlapping, wavy lines in a light red color, creating a sense of motion and depth. The lines are most prominent on the left and right sides, curving towards the center. The overall color palette is a gradient of light reds and pinks.

DESIGN COLLECTION

SPECTER KOREA

2021



WACX 892



WACX 893



WACX 894



WACX 895



WACX 896



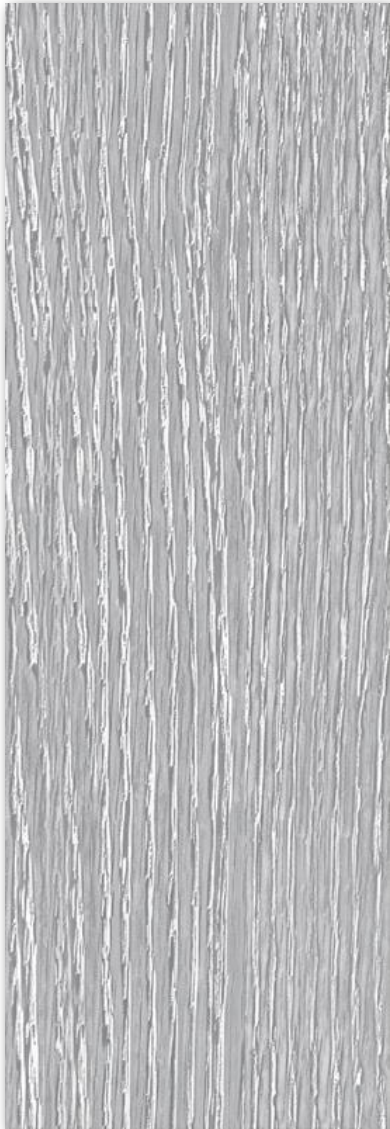
WACX 897



WACX 898



WACX 899



WAEX 900



WAEX 901



WAEX 902



WAEX 903



WACX 904



WACX 905



WACX 906



WACX 907



WACX 908



WACX 909



WACX 910



WACX 911



WACX 912



WACX 913



WACX 914



WACX 915



AACX 900



AACX 901



AACX 902



AACX 903



AACX 904



AACX 905



AACX 906



AACX 907



AACX 908



AACX 909



AACX 910



AACX 911



AACX 912



AAEX 913



AAEX 914



AAEX 915



AAEX 916



AAEX 917



AACX 918



AACX 919



AACX 920



AACX 921



AACX 922



AAGX 923



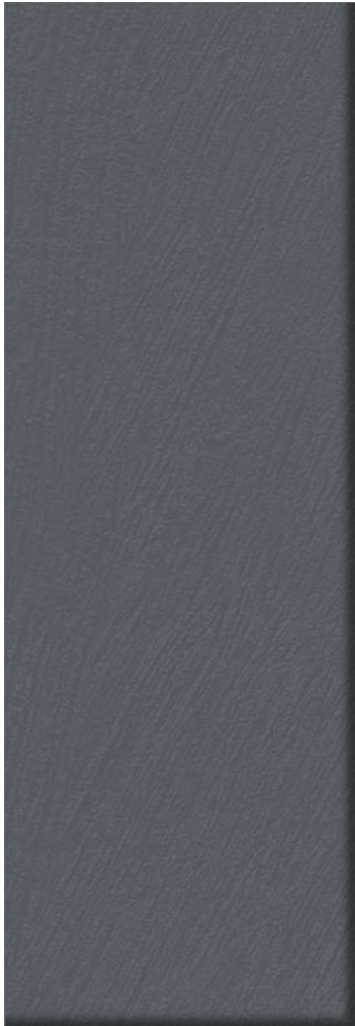
AAGX 924



AAGX 925



AAGX 926



AACX 927



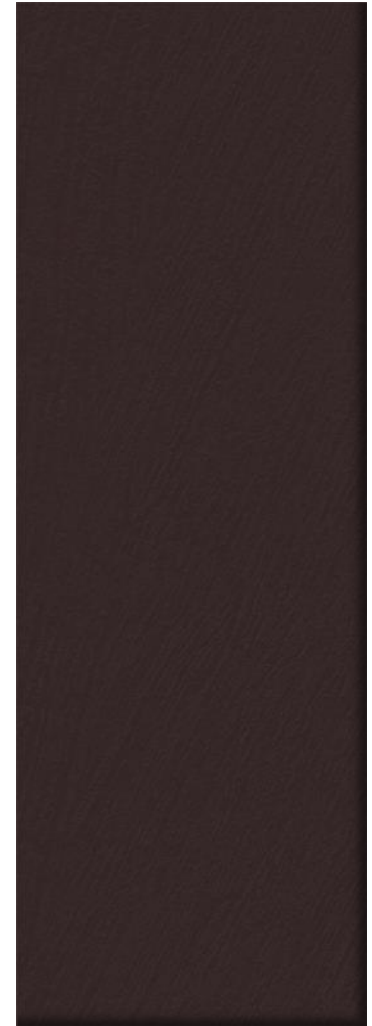
AACX 928



AACX 929



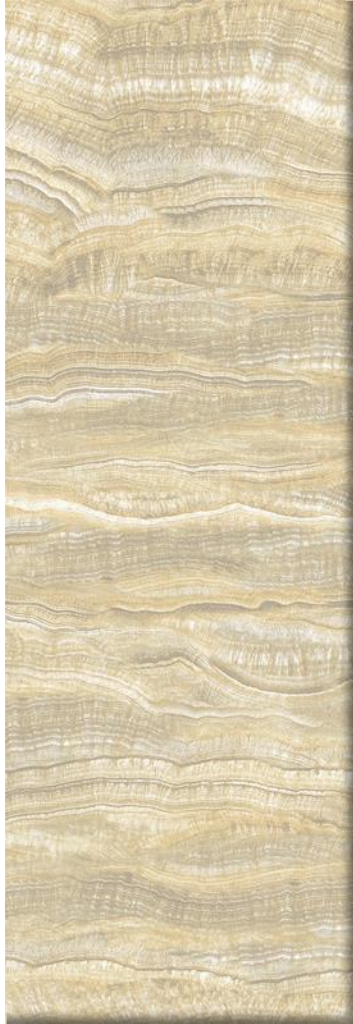
AACX 930



AACX 931



AAGX 932



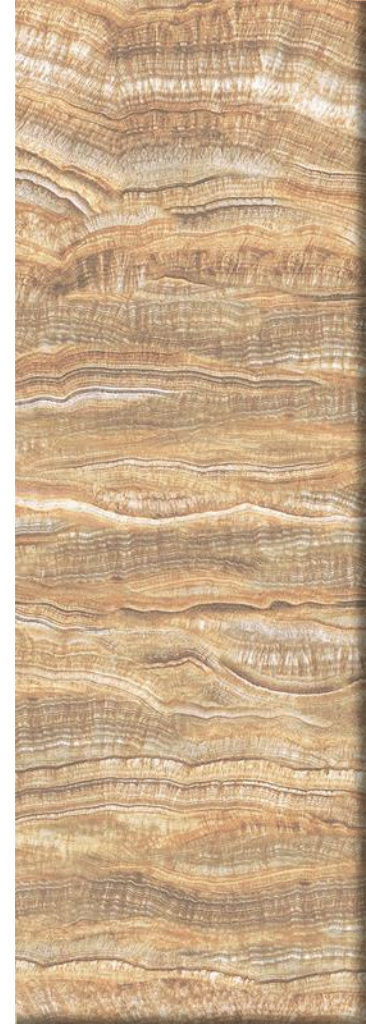
AAGX 933



AAGX 934



AAGX 935



AAGX 936



AACX 937



AACX 938



AACX 939



AACX 940



AACX 941



AACX 942



AACX 943



AACX 944



AACX 945



AACX 946



AACX 947



AACX 948



AACX 949



AACX 950



AACX 951



AACX 952



AACX 953



AACX 954



AACX 955



AACX 956



AACX 957



AACX 958



AACX 959



AACX 960



AACX 961



AACX 962



AACX 963



AACX 964



AACX 965



AACX 966



AACX 967



AACX 968



AACX 969



AACX 970



AAGX 971



AAGX 972



AAGX 973



AAGX 974



GACX 1038



GACX 1039



GACX 1040



GACX 1041



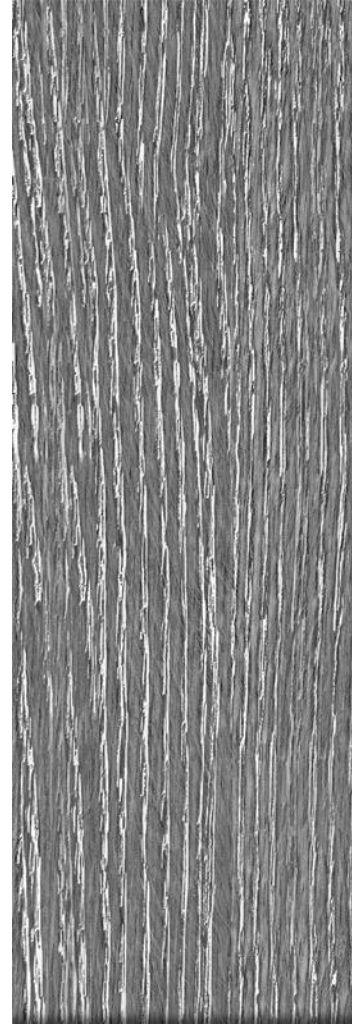
GAEX 1042



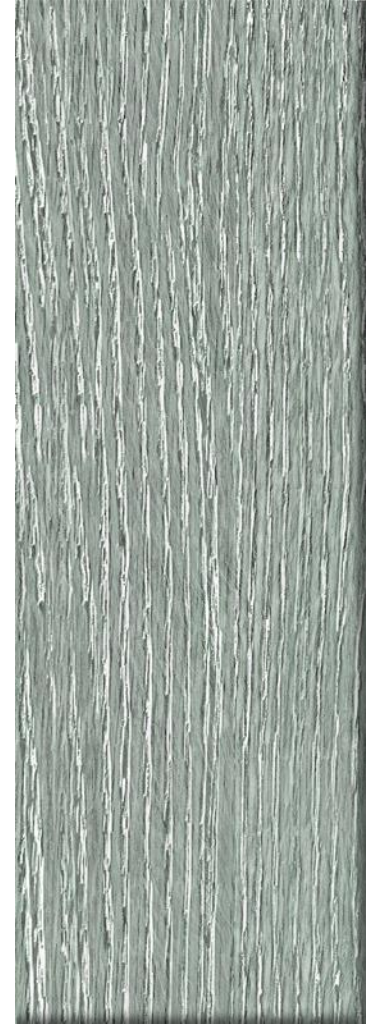
GAEX 1043



GAEX 1044



GAEX 1045



GAEX 1046



GAEX 1047



GAEX 1048



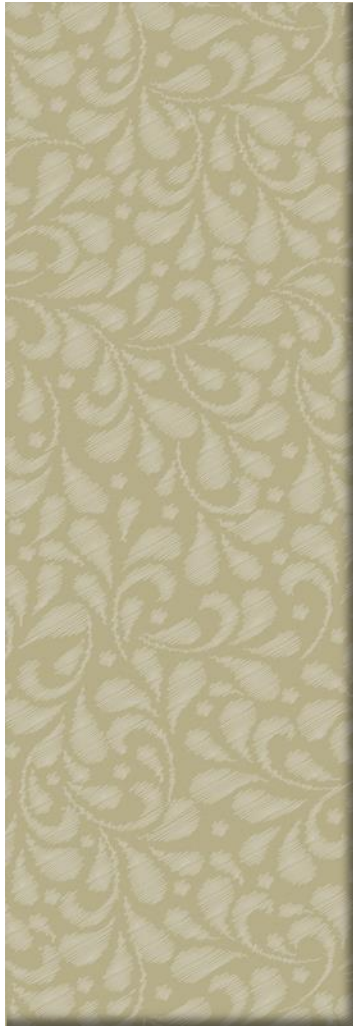
GAEX 1049



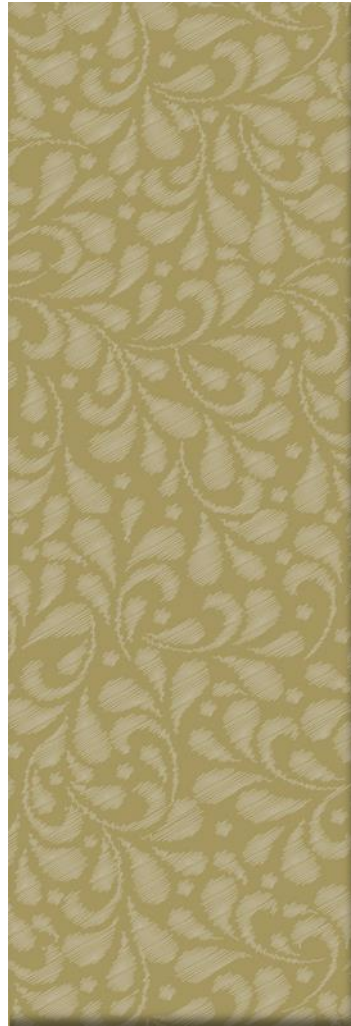
GAEX 1050



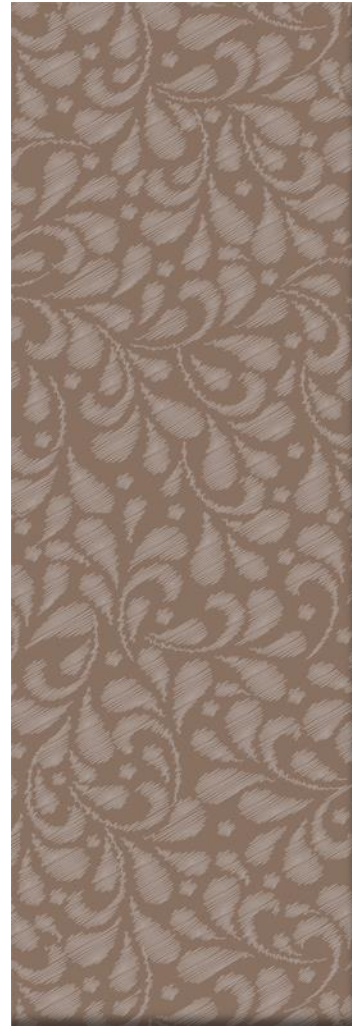
GAEX 1055



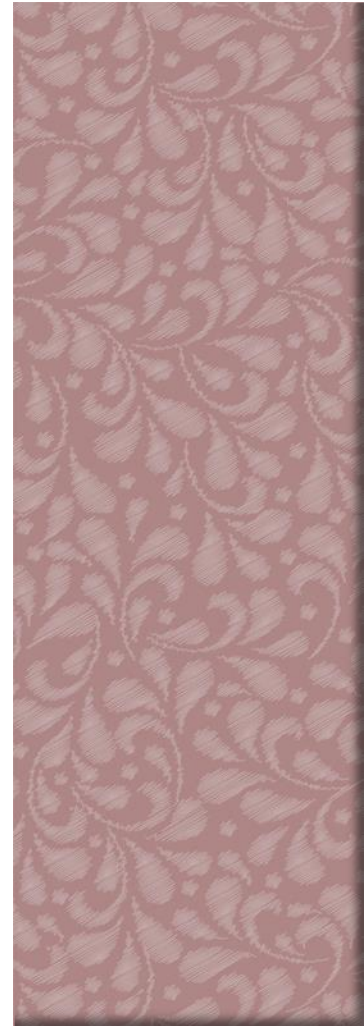
GAEX 1056



GAEX 1057



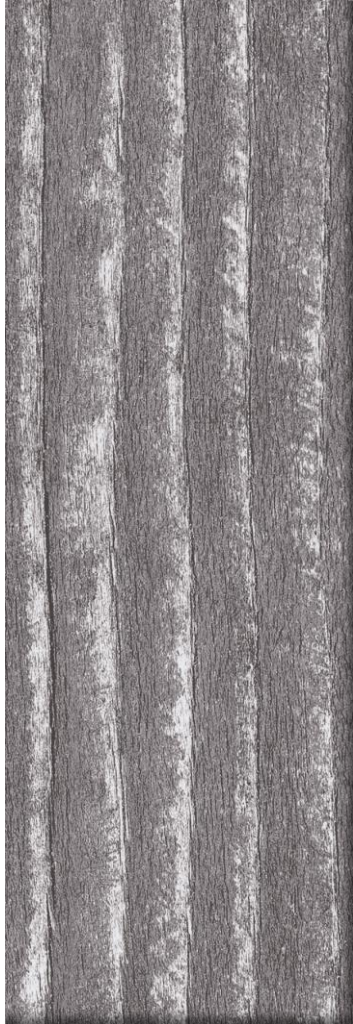
GAEX 1058



GAEX 1059



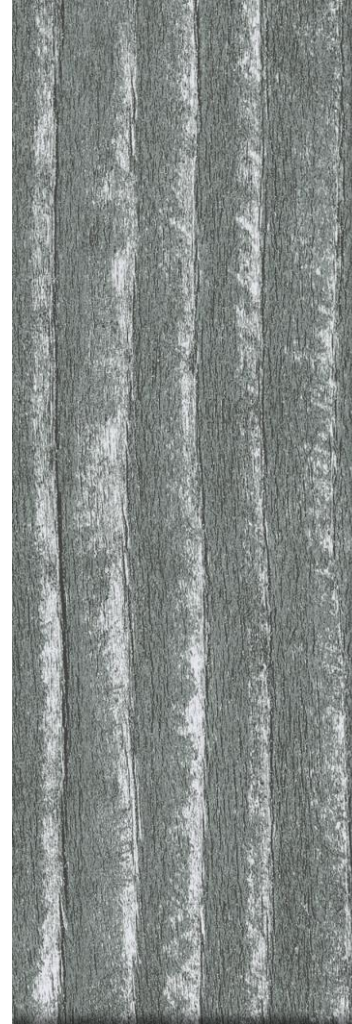
GACX 1060



GACX 1061



GACX 1062



GACX 1063



GACX 1064



GACX 1065



GACX 1066



GACX 1067



GACX 1068